

Useful Information for Nursery Families at Stepney Park Primary School



Class Teachers: **Abi**- Seedlings



Ifrah - Saplings

Nursery Support Staff: Tara, Nilufa, Amina, Lorraine, Fateha, Nadine
Early Years Leads: Abi and Dee

Please make sure your child has the following at school each day:

<p><u>Reusable Water Bottles</u> We encourage all children to drink water across the day to stay healthy.</p>	<p><u>Wellington Boots</u> For exploring outside in all weather, including our woodlands. These can stay at school on their pegs.</p>	<p><u>Spare clothes</u> Please provide at least 2 of the following items: underwear; socks; t-shirts; trousers/leggings; jumpers.</p>	<p><u>Book Bag</u> So children can safely transport their reading books to and from school. These can be purchased at school uniform shops or the school office.</p>	<p><u>Suitable clothing for the weather</u> Please provide a cap or a hat and suitable coat and check the weather forecast each day. Your child is allowed to play outside in all weather (unless dangerous).</p>
<p>All clothing and items to be labelled clearly with your child's name + surname initial. (ie Sara K)</p>				

Clothing



Please dress your child in comfortable clothing which they can independently remove.

Your child will be encouraged to play with a variety of resources at school including paints, sand, mud and flour as part of their understanding of different materials.



Whilst we will do our best to teach your child to play in a way that keeps them clean or to wear aprons or overcoats, they will often get messy. Please send your child into school in clothing which you (and they!) don't mind getting messy and dirty. Children will also be encouraged to have lots of physical activity including climbing, riding bikes and balancing on equipment. Please send your child into school in comfortable and safe clothing. We recommend tracksuit trousers and leggings which make movement easy. Clothing should be easy for your child to take off and put on independently (or with little support).



Footwear: Your child should wear trainers which they can easily take on and off by themselves. Velcro trainers are preferable. No open toed sandals or shoes which are unsafe for climbing and using the bikes outside.



Timings for the day (after transition weeks)

All drop-offs are through the Smithy Street car-park gate.

- Full-time and Morning children can be dropped off from 8:50 am. Children who arrive after 9am will be late and need to come through the office.
- Morning children can be collected from 11:55 am from the classroom playground, via the car-park gate. Please aim to collect your child by 12:00 at the latest.
- Afternoon children can be dropped off from 12:25 pm for a 12:30 start.
- Full-time and Afternoon children can be collected at 3:30pm from the classroom playground doors. Parents must enter through the large main Smithy Street gate.

Tapestry (tapestryjournal.com)

Tapestry is our online communication platform. We use this to record photos and observations of your child and to share information about their learning with you. You can also share information with us. We will also use Tapestry to keep you informed of trips, events and activities at school and to invite you to share learning experiences.

You will need access to a device which has the internet, in order to log onto Tapestry.

We will have parent and carer training sessions every day across the week beginning 16th September.

Physical Care and Health

Drinks and snacks: Please provide a water bottle for your child. The school will provide fruit and snacks such as crackers and bagels. We will also provide milk. Your child will be taught to access these independently. There is no need to provide any other food or drink for your child unless they have a dietary need which you must discuss with their teacher.

Toileting: We expect nursery children to be able to use the toilet independently. We know that sometimes we will have to help children who have accidents. All adults in Nursery will be expected to change children if needed, including changing nappies or cleaning a child if needed.

Medication: If your child needs any medication or creams you will need to fill in a form at the office along with an explanation of the reasoning for this so that we can store and administer these.

Nursery Meals

If your child is full-time, hot lunches will be provided. The price for one meal is £2.90 and you will be expected to pay in advance for the week. You will not be charged if your child is absent (your meal will roll over to the following week). As we are a cashless school, all payments must be made on ParentPay. We will provide you with your ParentPay account details in September. You may provide your child with a packed lunch instead, as long as it meets our allergy requirements. This will need to be a healthy and nutritious meal that can be eaten cold, as it cannot be reheated at school

Communication

School Telephone: 0207 884 5225 **Email:** admin@stepneypark.towerhamlets.sch.uk

The School Website has all useful information you may need: www.stepneypark.towerhamlets.sch.uk

Let us know immediately if you change address or phone number. Thank you!

Preparing for Nursery at Stepney Park



There is lots you can do at home, to help your child be ready to start Nursery with confidence to learn new things, join in with all the different activities and feel happy and proud at Stepney Park Nursery. Here are a few ideas below.

Communication and Language: Learn [Nursery Rhymes](#) and sing these together, make up actions or movements to go along with them. Read stories together. There are great stories on the [Cbeebies](#) website as well as the [Bedtime Stories](#) on iPlayer.



Maths: Count objects around them, look at shapes, and start to find numbers in the environment. Check out these links for some good activities. [Maths Art and Craft](#) Here are some good ideas for maths [activities](#) at home and some other [engaging](#) activities. These [nursery rhymes](#) specifically develop counting skills.



Understanding the World: Build up your child's interest in the world around them- play in the park, go to the woods, visit the farm and enjoy the free [museums](#) in London. Talk with them about what they see and what they think.



Prepare them to become inquisitive, with their own ideas and excited to learn more.

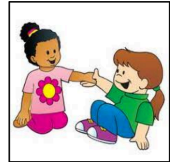
Physical Development: Develop their fine motor skills: Do arts and crafts at home, cutting, sticking and drawing. Help your child to dress and undress independently, including buttons and zips. Give them time to paint and build, for example with lego.



Develop their gross motor skills: Encourage them to spend more time out of the buggy and walking independently. Support them to climb and balance on even more challenging equipment in the park. Play throwing and catching games and sports like football. Balance, dance and jump together, developing new movements and strengthening their bodies. Make activity fun by adding music.



Personal Social and Emotional Development: Help your child to use please and thank you when asking for things. Show them how to wait their turn when playing with other children and to 'use their words' when they are upset. Act out stories with them, have fun making costumes, dressing up and singing songs or retelling stories with toys. Name their emotions eg when they are happy, excited or sad and let them know these are natural. Discourage aggressive behaviour such as hitting and shouting and make sure they understand about using kind, gentle hands.



Prepare your child for their nursery day by developing good bedtime routines. It is recommended that 3-4 year olds sleep between 10-13 hours a day, which may still include naps.

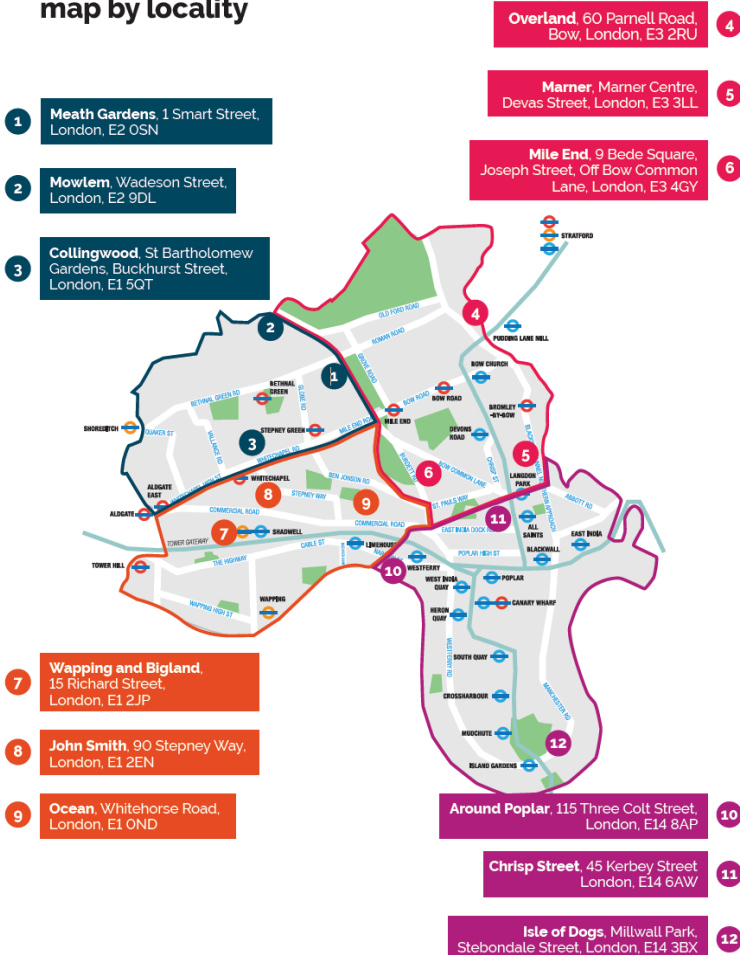
Train your child to independently use the toilet, and use the summer holidays to get your child out of nappies during the day. The [NHS](#) has advice on toilet training. Please keep the school informed if you are having issues with preparing your child to toilet independently. *We do not provide nappies in the nursery.*



Learn the route to school if it is new to them and check the best route for your journey to get them into school on time.

Visit your local [Children's Centre](#) over the summer.

Tower Hamlets Children's Centre map by locality



These are free and open for all parents and carers with children from birth-19 years of age (up to 25 for those with Special Educational Needs and Disabilities), who live in the borough to access a range of services including:

- Play
- Family support
- Health
- [Training](#)
- Employment

You can take part in play, get advice on issues such as toileting and meet other families.



Access our [Early Years](#) section of our website for lots more information on understanding learning in Nursery.

